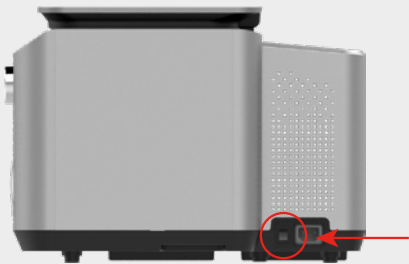
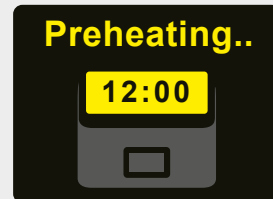


## 1 Power on



- Turn on the power switch on the side of the sterilizer.
- ✓ Make sure the power line is plugged in.
- ✓ Make sure the power button is on.

## 2 Preheating



- When the power is turned on, the preheating proceeds automatically.
- ✓ Takes about 15 minutes maximum.
- ✓ Automatic entry to the Ready screen when 100% is reached.

## 3 Load Cartridge (Step 1)



- Lower compartment hatch handle on the front of the product.



- Hold the hatch handle and lift it up to open the compartment.

## 4 Load Cartridge (Step 2)

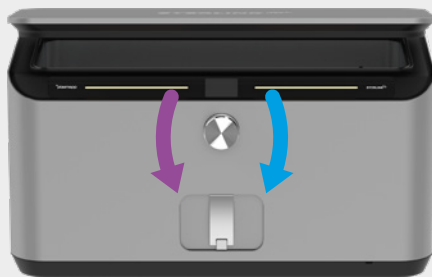


- Load the sterilant consumables by sliding puck onto lower rails until click
- ✓ Align it with the rail and slide it in until it clicks into place.

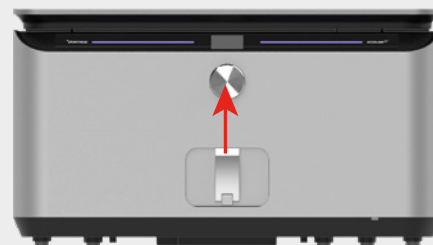


- After checking that the sterilant consumables are loaded in the correct position, pull hatch handle down and completely close hatch.
- ✓ Error will occur if it is not closed all the way

## 5 Sterilization



- Hold the door, open it
- Use the dedicated tray provided to load the object to be sterilized



- After loading, close the door and turn the dial to select the desired sterilization process.
- Press the dial to perform the sterilization process.

## 6 Sterilization Complete

Standard Mode  
Sterilization

17 min

Standard Mode  
Sterilization

Complete

Advanced Mode  
Sterilization

24 min

Advanced Mode  
Sterilization

Complete

- When the sterilization process is completed and the 'Complete' screen is displayed, open the door and retrieve the object.
- ✓ The sterilization execution screen for each selected mode and the screen displayed after the sterilization is completed. (Remaining time is shown)

## How to Take Action in the Event of Problems

Phenomenon	Description	How to Take Action
 <b>Caution</b> Description	Empty Cartridge	▪ Replace cartridge
	Expired Cartridge	▪ Replace cartridge
	shutdown occurred / during process	▪ Restart after checking the power cable ▪ Call service center in case of recurrence
	Emergency stop (When Purification process is completed)	▪ Restart the process
	sliding door / was opened (When Purification process is completed)	▪ Restart after confirming that the cartridge door is closed ▪ Call service center in case of recurrence
	chamber door / was opened (When Purification process is completed)	▪ Restart after confirming that the chamber door is closed ▪ Call service center in case of recurrence
 <b>Code XX</b> Description	Code. 10 Rebooting or / contact service center	▪ Restart the process ▪ Call service center in case of recurrence
	Code. 20 Base pressure / issue (When Purification process is completed)	▪ Restart the process after removing moisture and oil from the chamber and sterilization object ▪ Call service center in case of recurrence
	Code. 21 Diffusion pressure / issue (When Purification process is completed)	▪ Restart after checking the cartridge status
	Code. 30 Invalid cartridge	▪ Replace cartridge

※ Please refer to your user manual and contact the manufacturer if the issue is not resolved or recurs.

## How to Clean

**Do not use organic solvents other than aqueous alcohol for exterior and interior cleaning.**

- If there is dust, lightly wipe the contaminated area with a wet tissue.
- If the stain is severe or cannot be removed with a wet wipe, use a cleaning sponge with water and wipe off any remaining stains with a cleaning wipe or soft cloth.
- If foreign substances including oil are present, spray disinfectant ethanol on the contaminated area and wipe off the remaining stain with a cleaning wipe or soft cloth.
- In the case of crayons and colored pencils, wipe by gently rubbing the contaminated area with a clean eraser.

※ **Cautions**

- Clean only when the machine is turned off.
- Do not use cleaners containing sodium hypochlorite-based or chlorine-based solutions.
- Do not use ketone substances and substances such as acetone, ethyl alcohol, toluene, methyl acid or methyl chloride.

## STERLINK U510 Self Check List (for reference)

NO.	Contents	Check list	Results	
			Yes	No
1	Installation	Have you read the user manual thoroughly before the installation?		
2		Check if the product has been installed on a level surface (within 3 degrees)		
3		Check if the product has been installed with a minimum clearance of 5cm from the back/front/left/right sides		
4		Check if the power cable provided by Plasmapp is being used Check if the power strip or the wall outlet is properly grounded		
5	Using	Are you using a dedicated CARTRIDGE for your product?		
6		Check if the CARTRIDGE has been correctly placed under the loading block		
7		Check if the products are thoroughly dried before initiating the cycle		
8	Clean	Check if the power is turned off		
9		Check if any prohibited chemicals or solutions have been used for cleaning the product		



User Manual



Plasmapp Channel

## Manufacturer

Company	<b>Plasmapp Co., Ltd.</b>
Address	(41061) 102, Cheombok-ro, Dong-gu, Daegu, Republic of Korea
Website	www.plasmapp.com